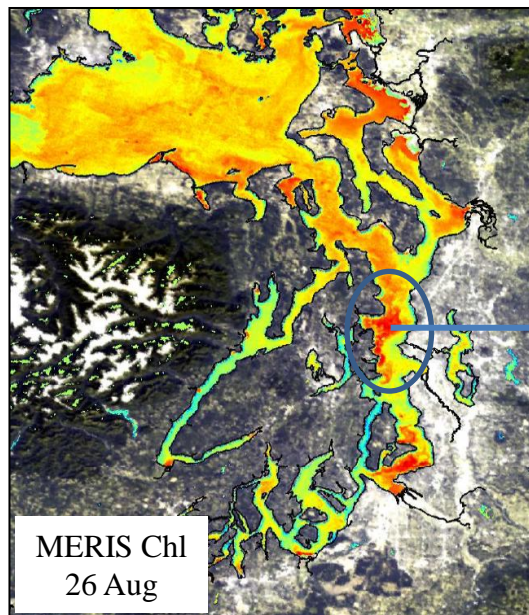
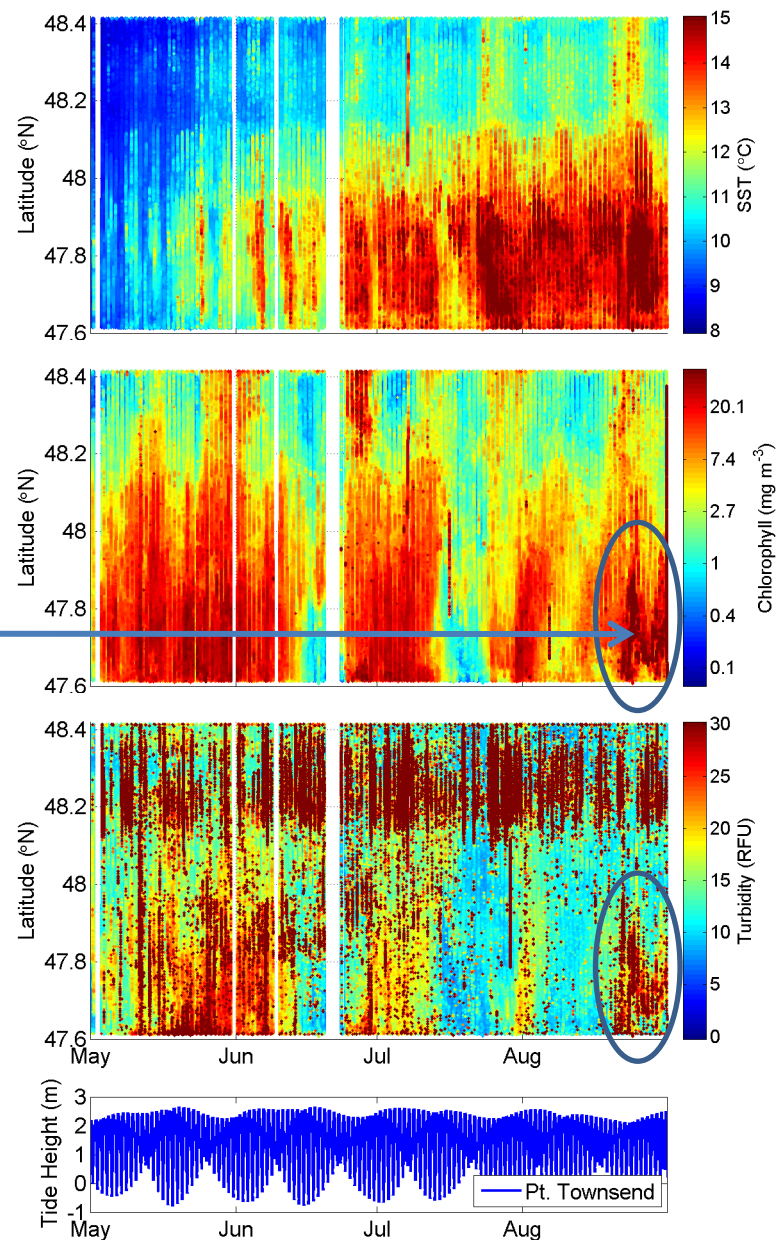


# Near-surface Observations of Phytoplankton Bloom Off Bainbridge Island 22-31 August 2011

Victoria Clipper fluorescence and turbidity data corroborate satellite ocean color imagery from 23 and 26 August suggesting that an intense phytoplankton bloom has formed off Bainbridge Island (~47.7 N). Daily ferry transects indicate that the latest bloom began around 22 August and is still present.



## Victoria Clipper ferry data through 1 May - 31 August 2011



Additional Ferry- and Satellite-derived products available at:  
[http://www.ecy.wa.gov/programs/eap/mar\\_wat/eops/clipper.html](http://www.ecy.wa.gov/programs/eap/mar_wat/eops/clipper.html)