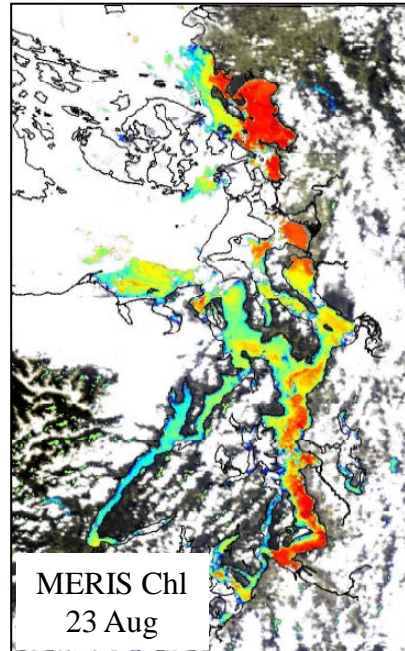
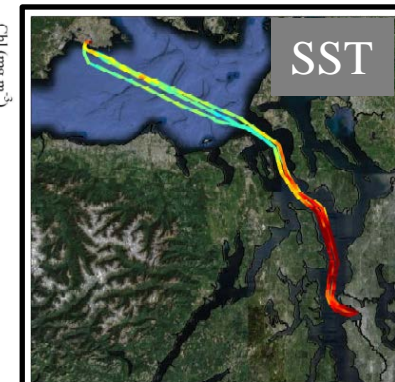
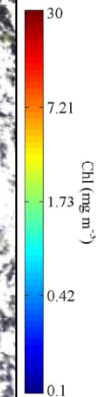


Near-surface Observations of Phytoplankton Bloom in Central Puget Sound 20-24 August, 2011

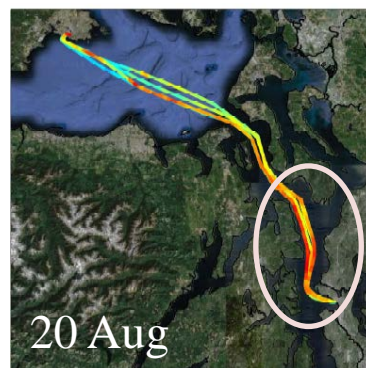
Phytoplankton bloom in central Puget Sound has intensified over the past few days. MERIS Chlorophyll (and [Fluorescence Line Height](#)) image from 23 August suggests that the bloom encompasses much of the area between Tacoma Narrows and the Triple Junction; including some areas with intense near-surface concentrations as shown in the MERIS MCI image that Jim Gower and Erika Young sent to the SoundHAB mailing list on 24 August.



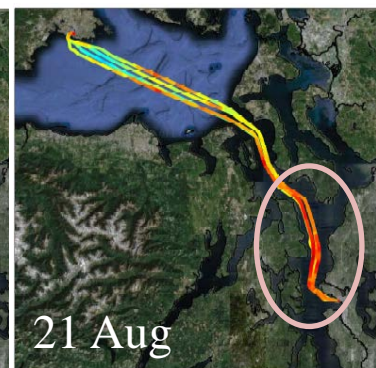
MERIS Chl
23 Aug



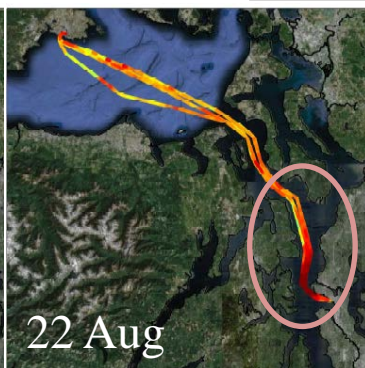
SST



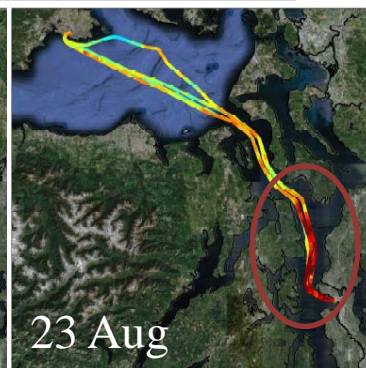
20 Aug



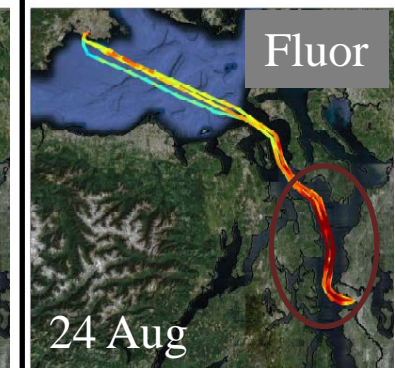
21 Aug



22 Aug

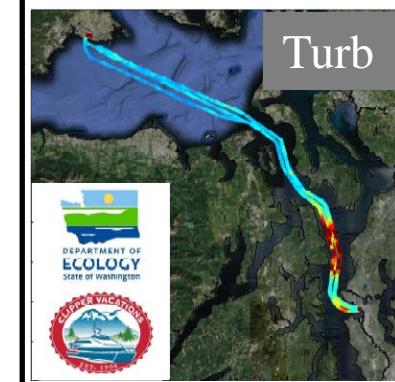


23 Aug

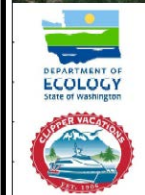


Fluor

24 Aug



Turb



Additional Ferry- and Satellite-derived products available at:

http://www.ecy.wa.gov/programs/eap/mar_wat/eops/clipper.html

Questions/Comments: Brandon Sackmann, Ph.D. (brandon.sackmann@ecy.wa.gov)