



# Massachusetts Marine Educators Boston Harbor Educators Conference

## CELEBRATING BOSTON HARBOR Changing the Tide for 21<sup>st</sup> Century Learners

\*1716      \*1916      \*1986      \*1996      \*2006      \*2016

**Saturday, October 1<sup>st</sup> - 8:45 am - 4:00 pm**  
**UMASS BOSTON**

### Schedule

8:15-8:45	Registration and Coffee
8:45-10:00	Welcome and Keynote Speaker: Giles Parker, Park Superintendent, National Park Service
10:00-10:15	Coffee and Exhibits
10:20-11:35	Workshop I
11:40-12:30	Lunch and Exhibits
12:40-1:40	Keynote Speaker: Liza Stearns, Director of Education, National Park Service
2:00-3:00	Workshop II
	-OR-
2:00	Proceed to boat
2:15-4:00	Trip to Spectacle Island

### Boat Trip to Spectacle Island

Join us aboard the Columbia Point for a brief boat ride followed by an exploration of one of our anniversary parks, Spectacle Island.

### Education Workshops – TBD

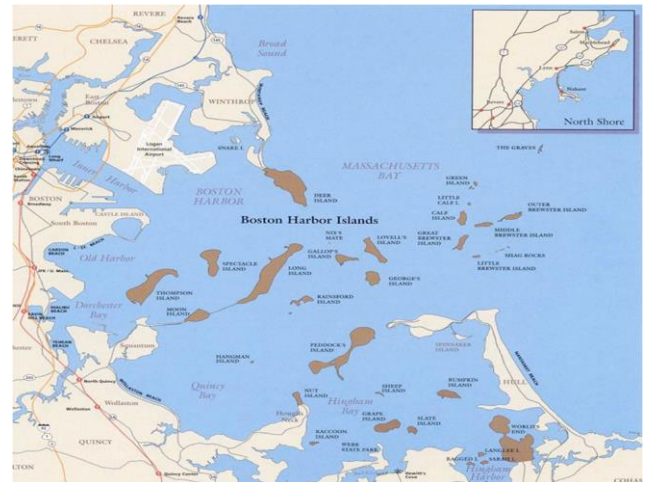
### Registration

\*Free Parking or MBTA reimbursement to the first 50 registrants.

To register for the conference:

<https://massmarineeducators.wufoo.com/forms/2016-bhec/>

\*Conference fee includes lunch



	Early Bird: June 1-Sept 15	Sept 15 – Sept 30
Member	\$60	\$65
Non-Members	\$90	\$95
Student Members	\$25	\$25
Student Non-Members	\$40	\$40

For questions, please contact Peg Collins [ccndpells@aol.com]

<http://ma-marine-ed.org/>

