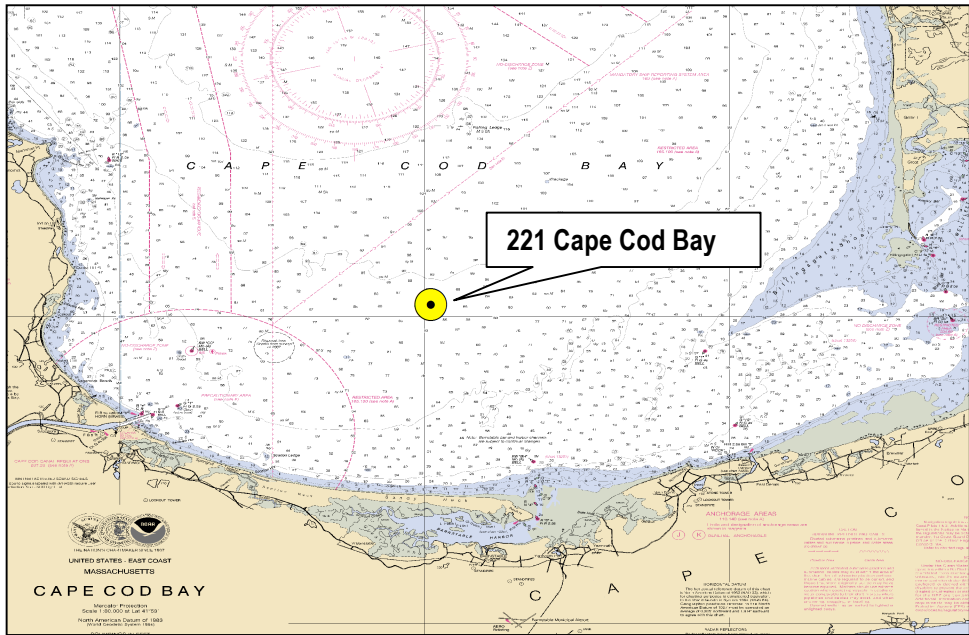




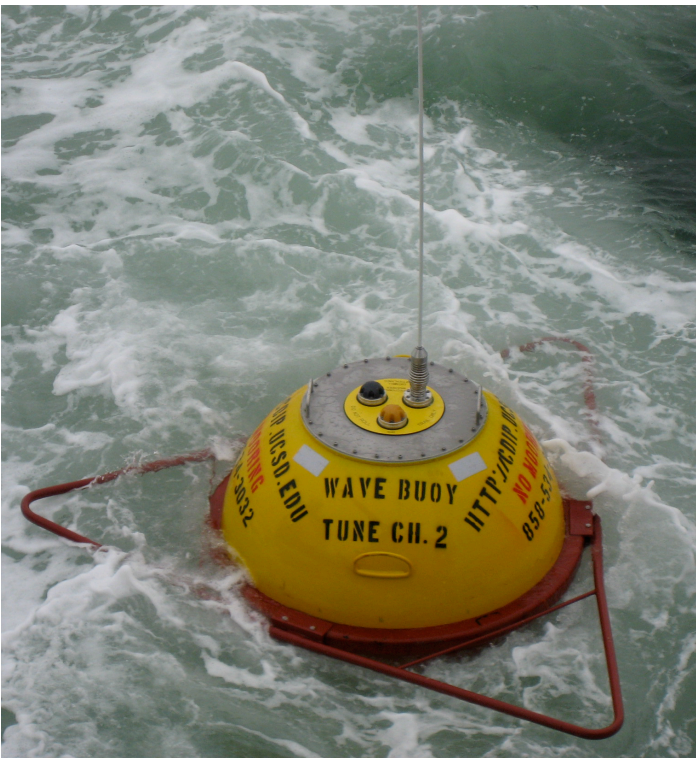
WAVE BUOY



Cape Cod Bay, MA – Station 221, NDBC 44090 - Deployed May 20, 2016



Location Cape Cod Bay
Latitude 41° 50.38' N
Longitude 070° 19.74' W
Water Depth 14 fthm, 85 ft, 26 m



IMPORTANT – Do not tie up to this buoy because it will interfere with data collection and may damage the buoy.

Buoy measures wave height, wave direction, wave period and sea surface temperature. The data are broadcast on the NWS Marine Weather Channel. Data are also **UPDATED EVERY 30 MINUTES** on the web at www.neracoos.org, <http://www.ndbc.noaa.gov>, and <http://cdip.ucsd.edu> (click on RECENT).

The wave height reported is the “significant” wave height (Hs), which represents the average of the 1/3 highest waves. Approximately double the Hs to obtain the maximum wave height.

At night time, the buoy will emit a yellow color Coast Guard compliant flashing light.

For questions concerning the data, contact **SCRIPPS INSTITUTION OF OCEANOGRAPHY**
 La Jolla, CA
 858-534-3032
 Email: www@cdip.ucsd.edu

