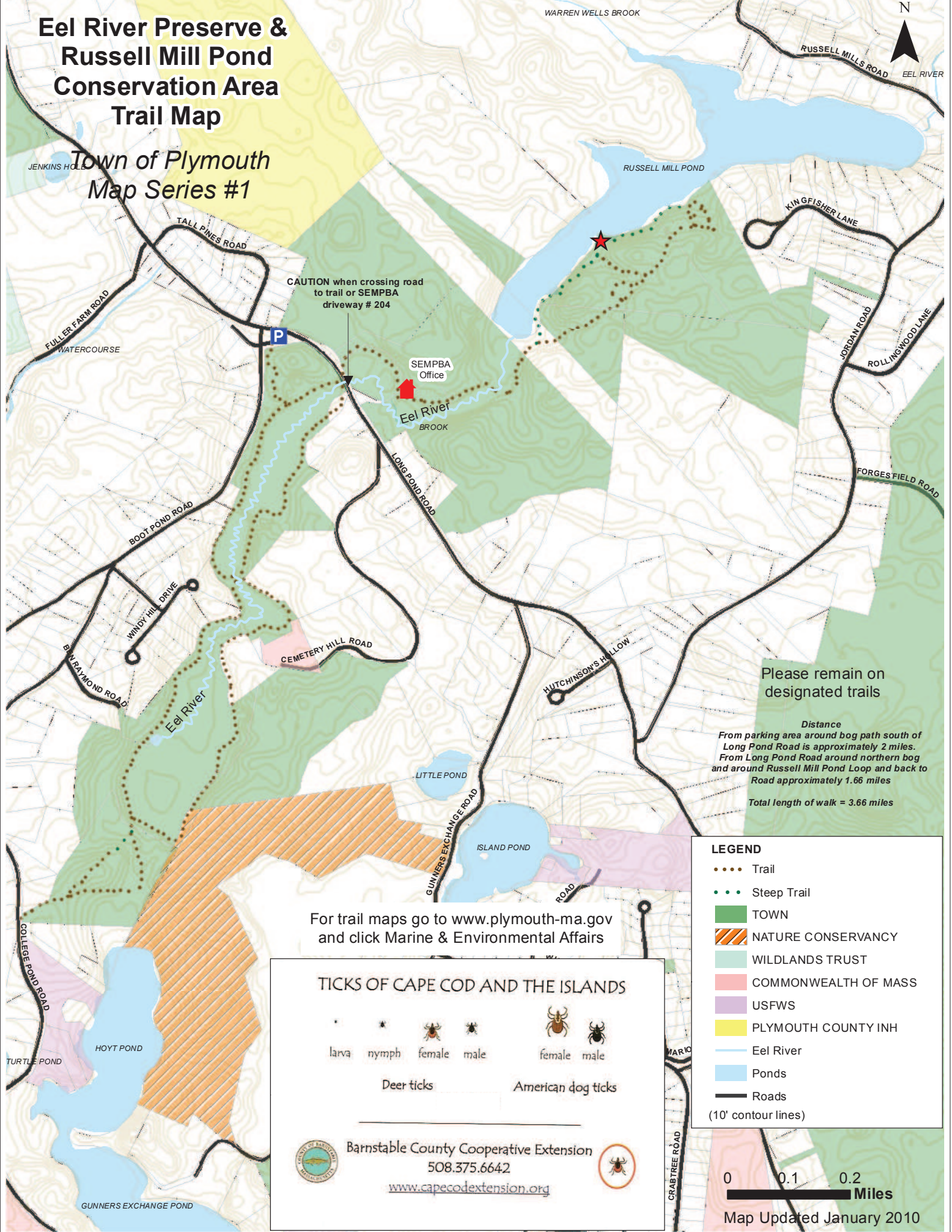


Eel River Preserve & Russell Mill Pond Conservation Area Trail Map

Town of Plymouth
Map Series #1



CAUTION when crossing road to trail or SEMPBA driveway # 204

SEMPBA Office

Please remain on designated trails

Distance
From parking area around bog path south of Long Pond Road is approximately 2 miles.
From Long Pond Road around northern bog and around Russell Mill Pond Loop and back to Road approximately 1.66 miles
Total length of walk = 3.66 miles

LEGEND

- Trail
- Steep Trail
- TOWN
- NATURE CONSERVANCY
- WILDLANDS TRUST
- COMMONWEALTH OF MASS
- USFWS
- PLYMOUTH COUNTY INH
- Eel River
- Ponds
- Roads
- (10' contour lines)

For trail maps go to www.plymouth-ma.gov and click Marine & Environmental Affairs

TICKS OF CAPE COD AND THE ISLANDS

larva	nymph	female	male	female	male

Deer ticks American dog ticks

Barnstable County Cooperative Extension
508.375.6642
www.capecodextension.org

0 0.1 0.2
Miles
Map Updated January 2010